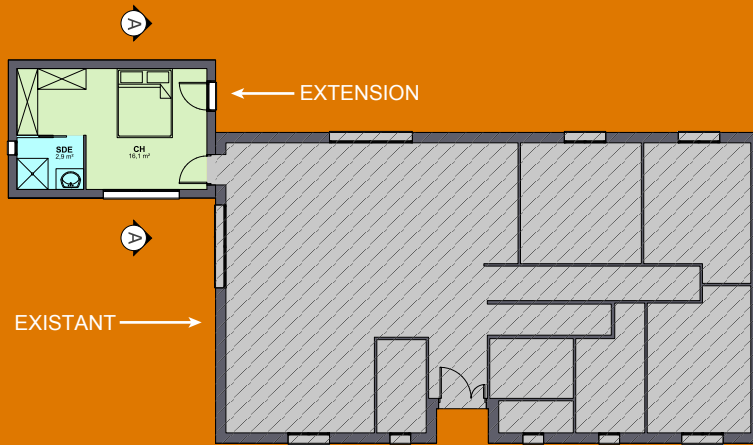
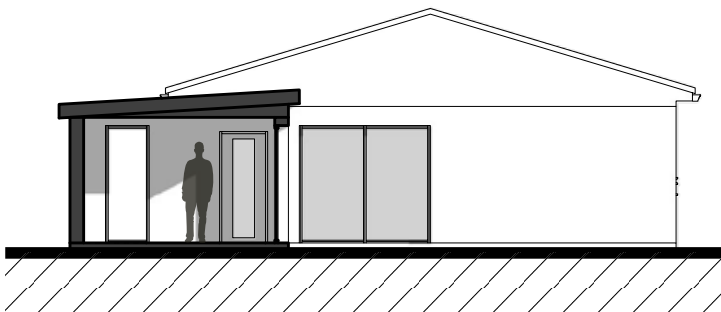


**PLAN 1**

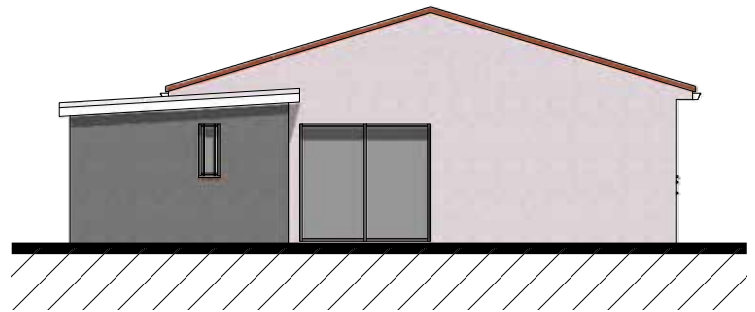
MALIE DIFFUSION INGENIERIE  
 13, bd Georges Ravari  
 81300 GRAULHET  
 06 10 49 46 97



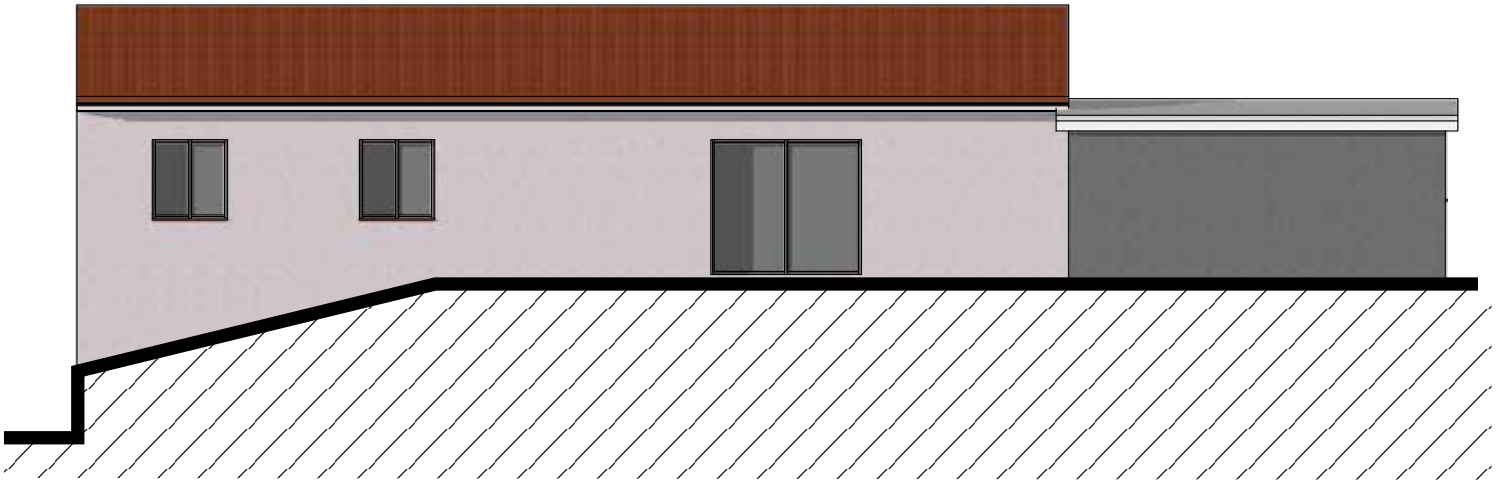
SURFACE HABITABLE : 19 m<sup>2</sup>  
 SURFACE DE PLANCHER : 19,9 m<sup>2</sup>



**COUPE AA**

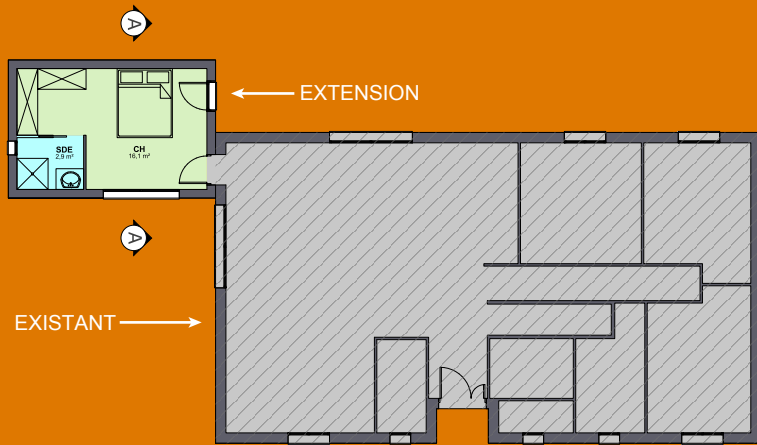


Malié Diffusion Ingénierie

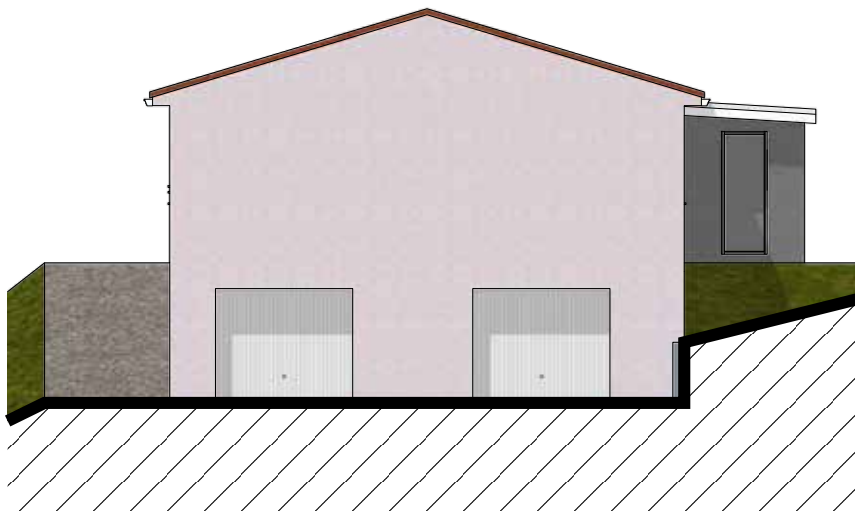


**PLAN 1**

MALIE DIFFUSION INGENIERIE  
 13, bd Georges Ravari  
 81300 GRAULHET  
 06 10 49 46 97



SURFACE HABITABLE : 19 m<sup>2</sup>  
 SURFACE DE PLANCHER : 19,9 m<sup>2</sup>



Malié Diffusion Ingénierie

Document non contractuel